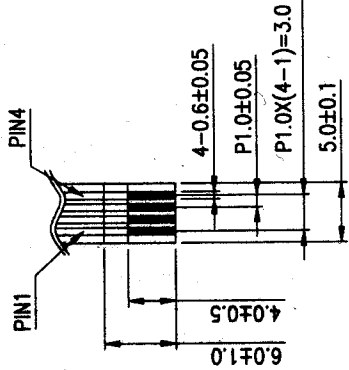
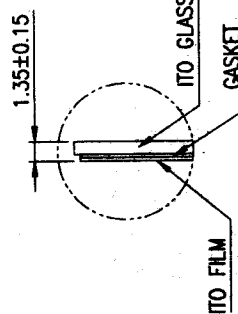
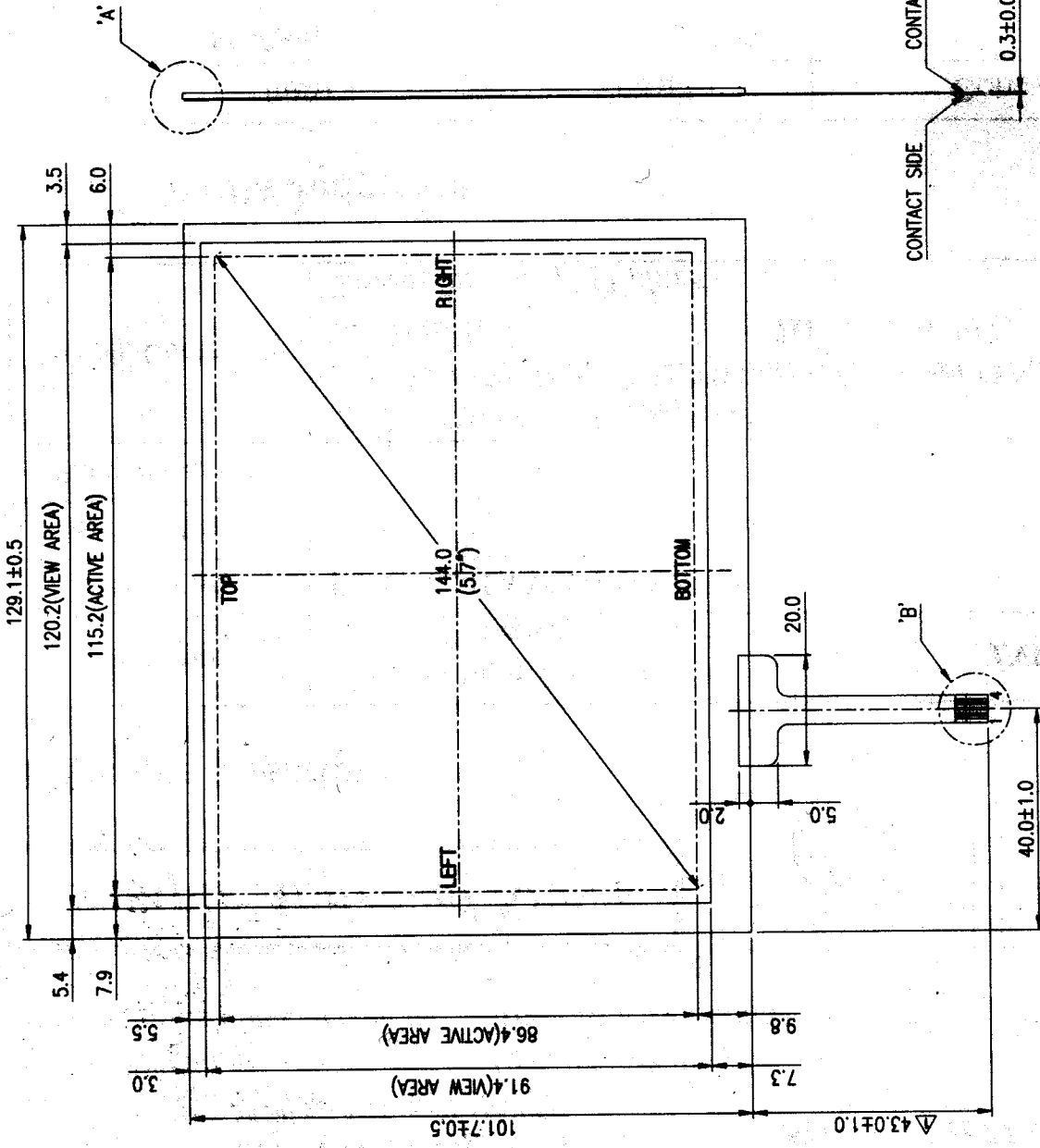


REVISED	DATE	DRAWN	CHECKED	APPROVED
0	02.04.19	M.J.KIM		
TAIL (98.0 - 43.0)		02.04.19		M.J.KIM



NOTE

- 1) TYPE : NON-GLARE TYPE
- 2) GLASS THICKNESS : 1.1t
- 3) FILM THICKNESS : 175/188 ± 10 μ m
- 4) CONNECTOR : FPC
- 5) GENERAL TOLERANCE : ± 0.3

APPROVE	UNIT	DRAWING NO.	REV.
CHECK	SCALE	0672AAA-0	
DESIGN		DESCRIPTION	SHEET
DRAW		5.7" TOUCH PANEL	1/1

5.7" TOUCH PANEL
SCALE : NONE

TERMINAL	
NO.	SYMBOL
1	TOP
2	LEFT
3	BOTTOM
4	RIGHT